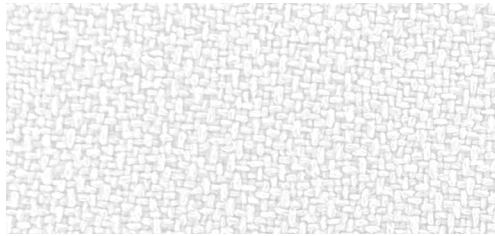


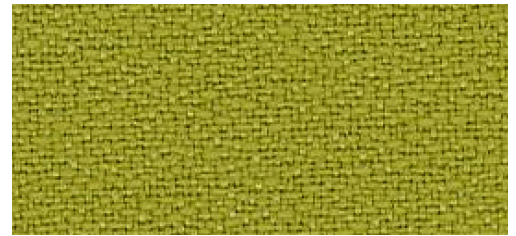
Vivid

Grade: A

9to5[®]
seating



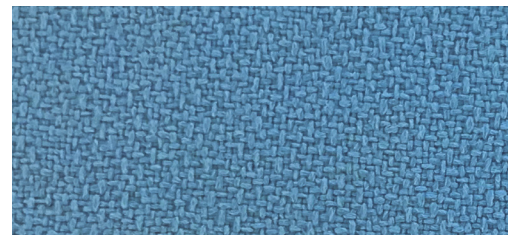
White Whisper



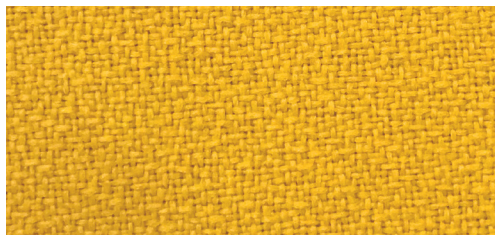
Apple



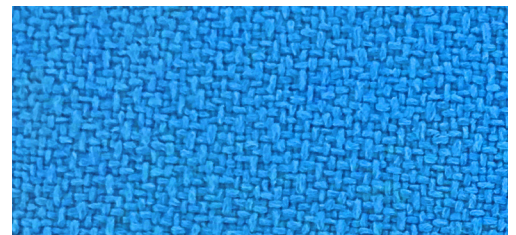
Latte



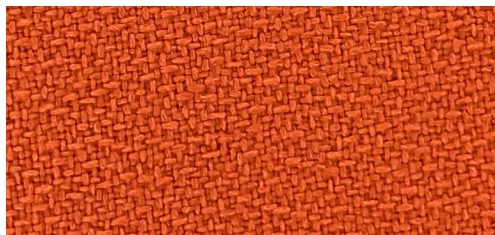
Lagoon



Lemon



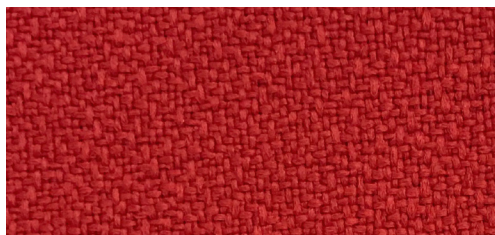
Azure



Tangerine



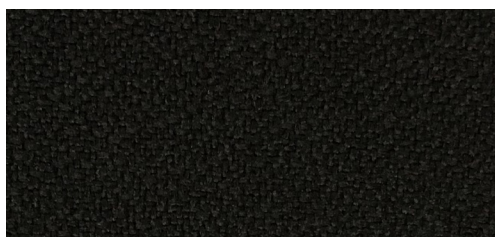
Federal Blue



Crimson



Cloud



Onyx



Dove

Pattern: Vivid

Content:
100% Polyester
Grade: A

Abrasion
Resistance: 120,000
(Double Rubs)



EXPRESSSHIP
FABRICS

9to5 Seating's ExpressShip Fabric Program

Need it fast? We have you covered with a wide variety of upholstery options! Our ExpressShip program offers expedited shipment on our seating products. Other ExpressShip fabric options include the 9to5 Signature, Breeze and Nautilus cards. Memo samples are available. Please contact the factory for larger swatches.

info

Pattern	Vivid
Content	100% Polyester
Abrasion Resistance (Double Rubs)	120,000
Cleaning Code	W
Grade	A



Vivid meets or exceeds these ACT Performance standards for upholstery

All patterns are FR free.

Icon Upholstery Definitions

- Fire Retardancy**
Flammable testing determines as fabric's resistance to burning.
Passes Cal 117.
- Colorfastness To Wet & Dry Crocking**
The rubbing off of color from the fabric onto clothing, hands or other materials and can occur under wet or dry conditions.
Passes AATCC 8-1974 Dry Crocking. Class 4 minimum, Wet Crocking. Class 3 minimum.
- Colorfastness to Light**
The degree to which fabric will retain its color when exposed to light. *Passes AATCC 16A-1974 or AATCC 16E-1976. Class 4 minimum at 40 Hours. Note: Class 4 minimum at 60 hours is recommended for direct sunlight exposure.*
- Physical Properties**
Brush Pill Test determines a fabric's pilling. Breaking/Tensile Strength Test determines the ability of a fabric to withstand tension without breaking or tearing. Seam Slippage Test determines the pulling apart of fabrics at the seams.
Passes Brush Pill ASTM D3511, 3-4 minimum. Breaking Strength ASTM D3597-D1682-64 (1975) 50 lbs. minimum in warp & weft, Seam Slippage ASTM D3597-D434-75 25 lbs. minimum in warp & weft.
- Abrasion**
The ability of a fabric to withstand damage from wear and rubbing.
Passes Heavy Duty Contract ASTM 3597 modified (No. 10 cotton duck); 30,000 double rubs Wyzenbeek Method or ASTM D4966 modified (with 21 oz. weight); 40,000 rubs Martindale Method.

Cleaning Codes

W: Water-based cleaning agents or foam may be used.

CAUTION: Use of water-based or detergent-based solvents may cause spotting, shrinking and/or permanent water stains. Solvent cleaning agents will remove water stains.

9to5[®]
seating

3211 Jack Northrop Ave.
Hawthorne, CA 90250

PHONE
888.925.SEAT

FAX
866.925.SEAT

EMAIL
sales@9to5seating.com

9to5seating.com
Follow us: @9to5seating

